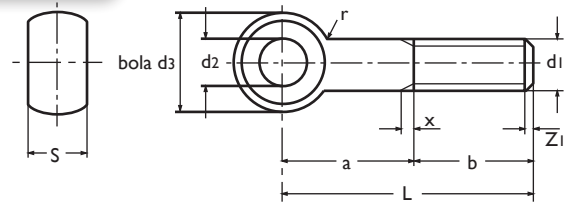


## TORNILLO DE OJO

Eye bolts  
Vis d'articulation



DIN 444

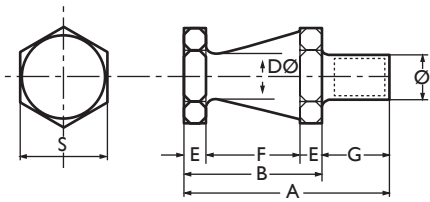


Ref.	d1 (mm)	L (mm)	d2 (mm)	d3 (mm)	b (mm)	s (mm)	INOX 304
60.850		50					
60.860	M-8	60	8	18	22	9	
60.880		80					
60.1050		50					
60.1060		60					
60.1070		70					
60.1080	M-10	80	10	20	26	12	
60.1090		90					
60.10100		100					
60.10120		120					
60.1250		50					
60.1260		60					
60.1270		70					
60.1280	M-12	80	12	25	32	14	
60.12100		100					
60.12125		125					
60.12150		150					
60.12160		160					
60.1680		80					x
60.16100		100					x
60.16120	M-16	120	16	32	40	17	x
60.16130		130					x
60.16150		150					x
60.16160		160					x
60.20100		100					x
60.20120		120					x
60.20130		130					x
60.20140		140					x
60.20150		150					x
60.20160	M-20	160	18	40	50	22	x
60.20180		180					x
60.20200		200					x
60.20220		220					x
60.20250		250					x
60.20260		260					x
60.24100		100					x
60.24120		120					x
60.24130		130					x
60.24140		140			60		x
60.24150		150					x
60.24160	M-24	160	22	45		25	x
60.24180		180					x
60.24200		200					x
60.24220		220			73		x
60.24250		250					x
60.24260		260					x
60.30150		150					
60.30160		160			72		
60.30180		180					
60.30200	M-30	200	28	55		30	
60.30220		220			85		
60.30250		250					
60.30260		260					

Consultar M33 y M36

#### ELEMENTOS DE TRANSPORTE NORMALIZADOS

Normalized carring element  
Anneux de levage

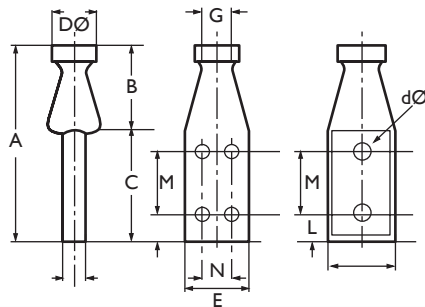


17001  
17002



170021  
170022  
170023

Ref.	Kp	Ø (mm)	S (mm)	DØ (mm)	A (mm)	B (mm)	E (mm)	F (mm)	G (mm)
17001	100	M-16	32	16	76	51	8	35	20
17002	150	M-20	41	20	90	60	10	40	25
170021	1.000	M-24	36	25	78	40	8	25	34
170022	1.500	M-30	41	32	95	50	10	32	40
170023	2.500	M-36	50	40	118	63	12	40	50



17003

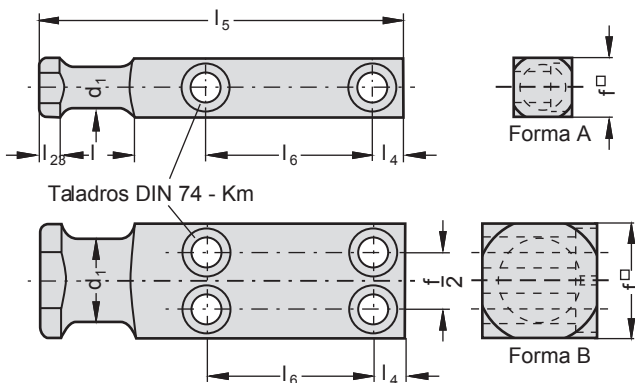


17004  
17005  
17006  
17007  
17008

Ref.	Kp	DØ (mm)	A (mm)	B (mm)	C (mm)	E (mm)	G (mm)	I (mm)	L (mm)	M (mm)	N (mm)	dØ (mm)
17003	150	40	115	52	63	38	16	12	13	30	-	10,5
17004	300	50	120	50	70	50	18	20	15	35	25	10,5
17005	600	60	145	65	80	60	22	30	16	40	30	12,5
17006	1.000	70	155	65	90	70	30	30	20	40	34	16,5
17007	1.500	80	165	65	100	80	37	40	20	50	40	16,5
17008	2.000	100	195	75	120	100	50	40	38	52	56	20,5

#### TIRANTES ELEVADORES

Ties for elevation  
Tirants de L'élévation



Taladros DIN 74 - Km



Forma	d1 (mm)	Km	f	L2 (mm)	L3 (mm)	L4 (mm)	L5 (mm)	L6 (mm)	Fuerza Elevacion kg
A	16	8	20	6	20	11	81	34	320
A	20	10	25	8	25	11	91	37	630
A	25	12	35	8	30	12	100	38	1250
A	32	16	40	10	32	16	120	46	2000
A	40	20	50	10	40	19	141	54	3200
A	50	24	60	12	45	22	160	59	5000
B	63	20	80	12	50	20	200	78	8000
B	80	24	100	15	65	25	250	100	12500
B	100	30	120	15	80	30	300	125	20000

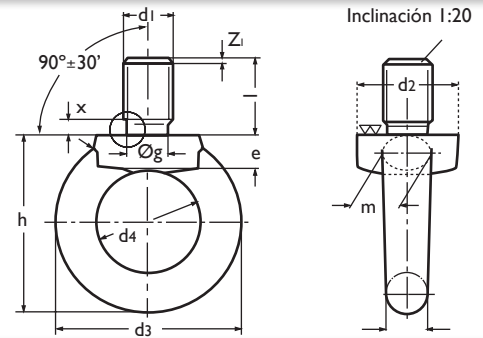
## TORNILLOS DE CÁNCAMO

Lifting eye bolts

Anneaux de levage (mâles)



k



d1	b min	d2	d3	d4	e	f	gh 13	h	k	l+1/2IT15	m	r1	r2	r3	t min	Peso*	↓	↕	
M-8	13	20	36	20	6	2,5	6	36	8	13	10	4	1	1	18,2	0,06	140	95	
M-10	17	25	45	25	8	3	7,7	45	10	17	12	4	1	1	22,5	0,11	230	170	
M-12																			
M-12 x 1,5 <sup>2</sup>	20,5	30	54	30	10	3,5	9,4	53	12	20,5	14	6	2	1,2	26,5	0,18	340	240	
M-16																			
M-16 x 1,5 <sup>2</sup>	27	35	63	35	12	4	13	62	14	27	16	6	2	1,2	33,5	0,28	700	500	
M-20																			
M-20 x 2	30	40	72	40	14	5	16,4	71	16	30	19	8	2	1,6	37,5	0,45	1.200	830	
M-24																			
M-24 x 2	36	50	90	50	18	6	19,6	90	20	36	24	12	2	2	44,5	0,74	1.800	1.270	
M-30																			
M-30 x 2	45	65	108	60	22	7	25	109	24	45	28	15	3	2	55	1,66	3.600	2.600	
M-36																			
M-36 x 3	54	75	126	70	26	8	30,3	128	28	54	32	18	3	2	65	2,65	5.100	3.700	
M-42																			
M-42 x 3	63	85	144	80	30	9	35,6	147	32	63	38	20	3	2,5	75	4,03	7.000	5.000	
M-48																			
M-48 x 3	78	100	166	90	35	10	41	168	38	68	46	22	4	2,5	81	6,38	8.600	6.100	
M-56																			
M-56 x 4		110	184	100	38	11	48,3	187	42	78	50	25	4	3	93	8,80	11.500	8.300	
M-64																			
M-64 x 4	90	120	206	110	42	12	55,7	208	48	90	58	25	4	3	106	12,4	16.000	11.000	
M-72 x 6																			
M-72 x 4	100	150	260	140	50	12	63,7	260	60	100	72	35	4	3	116	23,3	21.000	15.000	
M-80 x 6																			
M-80 x 4	112	170	296	160	55	12	71,7	298	68	112	80	35	4	3	128	34,2	28.000	20.000	
M-100 x 6																			
M-100 x 4	130	190	330	180	60	12	91,7	330	75	130	88	40	4	3	146	49,1	38.000	37.000	

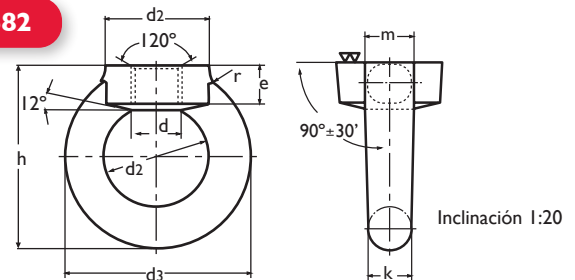
## TUERCAS DE CÁNCAMO

Lifting eye nuts

Anneaux de levage (femelles)



DIN 582



d1	d2	d3	d4	e	h	k	M	r	Peso*	↓	↕	
M-8	20	36	20	8,5	36	8	10	4	0,05	140	95	
M-10	25	45	25	10	45	10	12	4	0,09	230	170	
M-12												
M-12 x 1,5 <sup>2</sup>	30	54	30	11	53	12	14	6	0,16	340	240	
M-16												
M-16 x 1,5 <sup>2</sup>	35	63	35	13	62	14	16	6	0,24	700	500	
M-20												
M-20 x 2	40	72	40	16	71	16	19	8	0,36	1.200	830	
M-24												
M-24 x 2	50	90	50	20	90	20	24	12	0,72	1.800	1.270	
M-30												
M-30 x 2	65	108	60	25	109	24	28	15	1,32	3.600	2.600	
M-36												
M-36 x 3	75	126	70	30	128	28	32	18	2,08	5.100	3.700	

d1	d2	d3	d4	e	h	k	M	r	Peso*	↓	↕	
M-42												
M-42 x 3	85	144	80	35	147	32	38	20	3,11	7.000	5.000	
M-48												
M-48 x 3	100	166	90	40	168	38	46	22	5,02	8.600	6.100	
M-56												
M-56 x 4	110	184	100	45	187	42	50	25	6,69	11.500	8.300	
M-64												
M-64 x 4	120	206	110	50	208	48	58	25	9,30	16.000	11.000	
M-72 x 6												
M-72 x 4	150	260	140	60	260	60	72	35	18,5	21.000	15.000	
M-80 x 6												
M-80 x 4	170	296	160	70	298	68	80	35	27,3	28.000	20.000	
M-100 x 6												
M-100 x 4	190	330	180	80	330	75	88	40	36,4	38.000	37.000	

Cargas admisibles por la pieza que se ha de colgar kg: ↓ Para un tornillo - ↕ Para dos tornillos en total

\* Peso: kg/pzas - Todas las medidas están en mm.