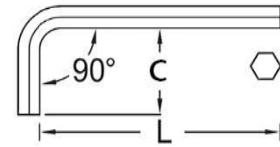


LLAVE ALLEN



DIN 911

Material CRV Pavonado 50-52 HRC
CRV Niquelado 50-52 HRC
FI Cincado



HEXAGONO	L	C
1,5	45	14
2	50	16
2,5	56	18
3	63	20
4	71	25
5	80	28
6	90	32
7	95	34

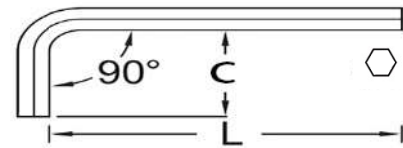
HEXAGONO	L	C
8	100	36
9	105	38
10	112	40
12	125	45
14	140	55
17	160	60
19	180	70
22	200	80

LLAVE ALLEN EXTRALARGAS



50-52 HRC

Material: FI 43



Ref.	HEXAGONO	L	C
110-15	1,5	90	14
110-20	2	100	16
110-25	2,5	112	18
110-30	3	126	20
110-40	4	142	25
110-50	5	160	28
110-60	6	180	32

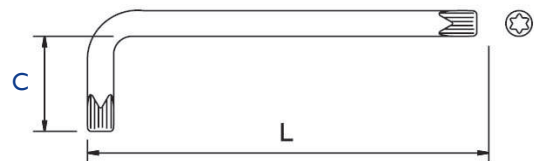
Ref.	HEXAGONO	L	C
110-70	7	190	34
110-80	8	200	36
110-90	9	210	38
110-100	10	224	40
110-120	12	250	45
110-140	14	280	55

LLAVE TORX



50-52 HRC

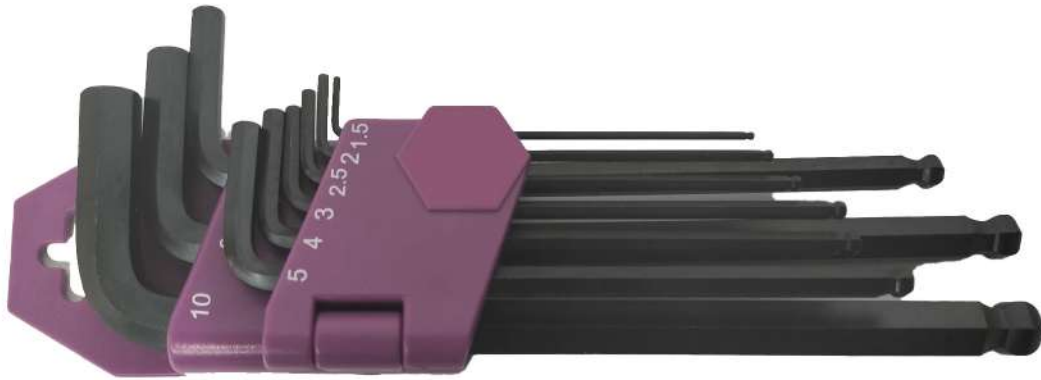
Material: FI 43



TORX	L	C
T6	75	15
T8	80	16
T9	80	16
T10	86	17
T15	90	18
T20	95	19

TORX	L	C
T25	105	21
T27	114	24
T30	124	26
T40	133	29
T50	152	32

LLAVES JUEGO BOLA



BOLA LARGA

Ref.	COMPOSICIÓN	PCS
100-L	1,5-2-2.5-3-4-5-6-8-10	9

Consultar llaves sueltas

LLAVE INGLESA



Ref.	MODELO	TIPO	CALIDAD	ENVASE	PERO	ANCHO	LARGO
WR-010-06	6"	• Ajustable	• Acero Cr-V	• Cartón	170 gr	20 mm	150 mm
WR-010-06	8"	• Graduación en mm	• Templado	• Troquel display	340 gr	25 mm	200 mm
WR-010-06	10"	• Mango PVC	• Pulido	• Bars code EAN-16	510 gr	30 mm	250 mm
WR-010-06	12"		• Cromado		850 gr	25 mm	300 mm
			• ISO 9002				