

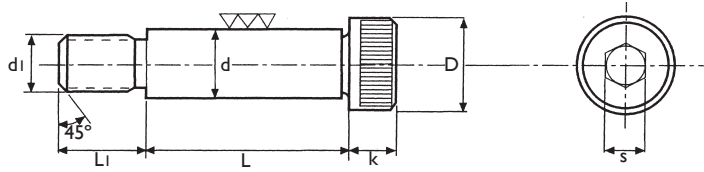
Tornillo y Bridas

Screw and Clamps / Creux et Brides

TORNILLO PASADOR CON HEXÁGONO INTERIOR

DIN 7379

Clase 12,9



Hexagonal Socket Head Shoulder Screw

Vis Epaulés à Six Pans Creux



dI	L (mm)	d h8 (mm)	D max.(mm)	K max. (mm)	L1 (mm)	s (mm)
M-5 x 0,8	10	6	10	4,5	9,5	3
	12					
	16					
	20					
	25					
	30					
	35					
	40					
	45					
	50					
M-6 x 1	10	8	13	5,5	11	4
	12					
	16					
	20					
	25					
	30					
	35					
	40					
	45					
	50					
	55					
	60					
	65					
70						
M-8 x 1,25	16	10	16	7	13	5
	20					
	25					
	30					
	35					
	40					
	45					
	50					
	55					
	60					
	65					
70						
80						
M-10 x 1,5	16	12	18	9	16	6
	20					
	25					
	25					

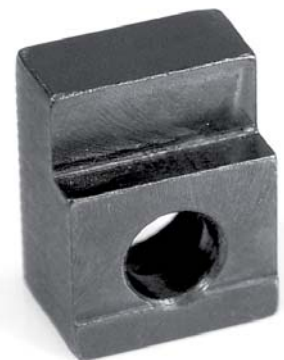
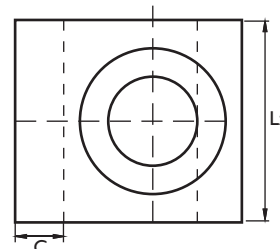
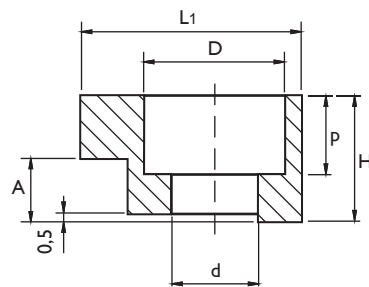
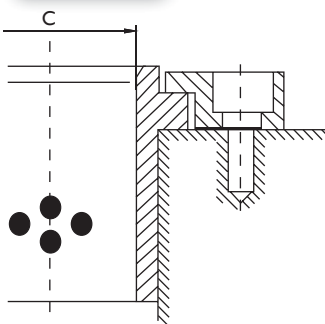
dI	L (mm)	d h8 (mm)	D max.(mm)	K max. (mm)	L1 (mm)	s (mm)						
M-10 x 1,5	30	12	18	9	16	6						
	35											
	40											
	45											
	50											
	55											
	60											
	65											
	70											
	80											
	90											
	100											
	120											
M-12 x 1,75	30	16	24	11	18	8						
	40											
	45											
	50											
	60											
	70											
	80											
	90											
	100											
	120											
	M-16 x 2						40	20	30	14	22	10
							50					
							55					
60												
70												
80												
90												
100												
120												
M-20 x 2,5		50	24	36	27	27	12					
		60										
	70											
	80											
	90											
	100											
	120											

BRIDA DE FIJACIÓN PARA CASQUILLO

N° 190

Clamp for guide bush

Bride pour canon



Ref.	D. Casquillo	L1 (mm)	L2 (mm)	D (mm)	d (mm)	p (mm)	H (mm)	A (mm)	C (mm)
19020	Ø25 a Ø50	25	20	15	9	8,5	15	6,3	5
19021	Ø63 a Ø160	32	25	17,5	11	11,5	18	6,3	10
19022	Ø20 a Ø50	20	20	11	7	7	10	6,3	5
19023	Ø63 a Ø100	32	32	17,5	11,5	11,5	16	10	10
19024	Ø25	16	16	10	5,5	6	10	5	4
19025	Ø32	16	16	10	5,5	6	10	6	4
19026	Ø40	25	25	12	6,6	7	12	8	4
19027	Ø50	30	30	16	9	9	16	10	4
19028	Ø63	35	35	18	11	11	20	12	4
19029	Ø80	45	45	22	14	13	25	16	4
19030	Ø100	50	50	22	14	13	32	20	4