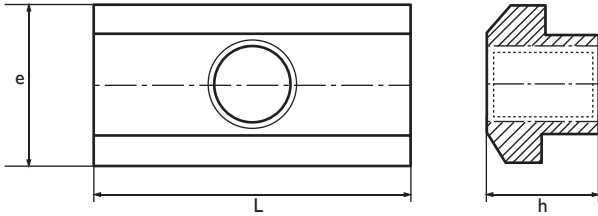


TUERCAS EN T LARGAS

DIN 508 L Material: Tratado / Heat treated steel



T slot nuts long
Tasseaux en "T" serie Longe

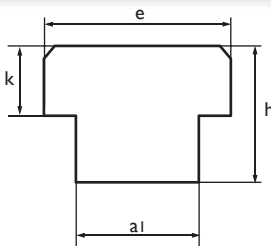


Ref.	□ a □	e (mm)	L (mm)	h (mm)
20245	M-6 × 8	13	26	12
2024	M-8 × 10	15	30	12
2025	M-10 × 12	18	36	14
2026	M-12 × 14	22	44	16
2027	M-14 × 16	25	50	18
2028	M-16 × 18	28	56	20

Ref.	□ a □	e (mm)	L (mm)	h (mm)
2029	M-18 × 20	32	64	24
2030	M-20 × 22	35	70	28
2031	M-22 × 24	40	80	32
2032	M-24 × 28	44	88	36
2033	M-27 × 32	50	100	40
2034	M-30 × 36	54	108	44

TUERCAS EN T CIEGAS

DIN 508 C Para fabricar tuercas fuera de normas



T slot nuts blocked
Tasseaux ebauches

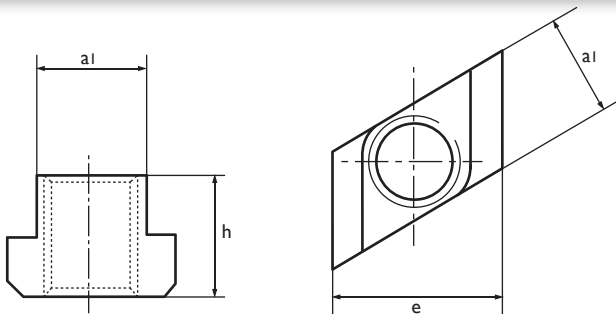


Ref.	□ a □	e (mm)	h (mm)	ai (mm)	k
20355	8	13	10	7,8	6
2035	10	15	12	9,7	6
2036	12	18	14	11,7	7
2037	14	22	16	13,7	8
2038	16	25	18	15,7	9
2039	18	28	20	17,7	10
2040	20	32	24	19,7	12
2041	22	35	28	21,7	14

Ref.	□ a □	e (mm)	h (mm)	ai (mm)	k
2042	24	40	32	23,7	16
2043	28	44	36	27,7	18
2044	32	50	40	31,7	20
2045	36	54	44	35,6	22
20455	42	65	52	41,6	26
204551	48	75	60	47,5	30
204552	54	85	70	53,5	35

TUERCAS EN T ROMBOIDE

DIN 510 Material: Tratado / Heat treated steel



T slot nuts oblique type
Tasseaux obliques



Ref.	□ a □	ai (mm)	h (mm)	e (mm)
2046	M-8 × 10	9,7	12	15
2047	M-10 × 12	11,7	14	18
2048	M-12 × 14	13,7	16	22
2049	M-14 × 16	15,7	18	25
2050	M-16 × 18	17,7	20	28

Ref.	□ a □	ai (mm)	h (mm)	e (mm)
20505	M-18 × 20	19,7	24	32
2051	M-20 × 22	21,7	28	35
20515	M-22 × 24	23,7	32	40
2052	M-24 × 28	27,7	36	44
2053	M-30 × 36	35,5	44	54