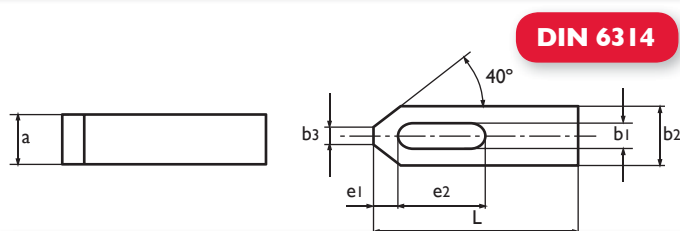


BRIDA PLANA

Plain clamps
Brides droites



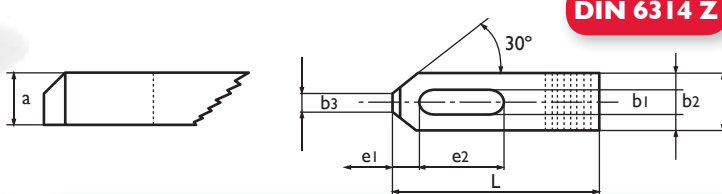
DIN 6314

Ref.	b1 (mm)	L (mm)	a (mm)	M	b2 (mm)	b3 (mm)	e1 (mm)	e2 (mm)
5000	7	50	10	M-6	20		10	20
5001	9	60	12	M-8	25	10	13	22
5002	11	80	15	M-10	30	12	15	30
5003		80						30
5004	14	100	20	M-12	40	14	21	40
5005		125		M-14				50
5006		100						40
5007	18	125	25	M-16	50	18	26	45
5008		160		M-18				65

Ref.	b1 (mm)	L (mm)	a (mm)	M	b2 (mm)	b3 (mm)	e1 (mm)	e2 (mm)
5009		160						60
5010	22	200	30	M-20	60	22	30	80
5011		250		M-22				100
5012		160						60
5013	26	200	30	M-24	70	26	35	80
5014		250	35					105
5015	34	250	40	M-30	80	34	45	100
5016		315	50					130
50161	42	400	60	M-36	100	43	100	150
				M-42				

BRIDA DENTADA

Step clamps
Brides crénelées



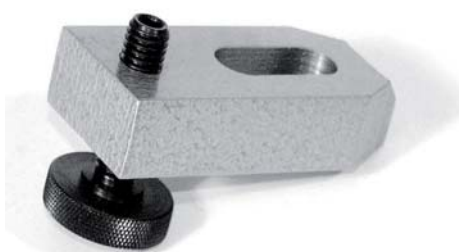
DIN 6314 Z

Ref.	b1 (mm)	L (mm)	a (mm)	M	b2 (mm)	b3 (mm)	e1 (mm)	e2 (mm)
50165	7	50	10	M-6	20	8	10	20
5017	9	60	12	M-8	25	10	13	22
5018	11	80	15	M-10	30	12	15	30
5019	14	100	20	M-12	40	14	21	40

Ref.	b1 (mm)	L (mm)	a (mm)	M	b2 (mm)	b3 (mm)	e1 (mm)	e2 (mm)
5020	18	125	25	M-16	50	18	26	45
5021	22	160	30	M-20	60	22	30	60
				M-22				
5022	26	200	30	M-24	70	26	35	80

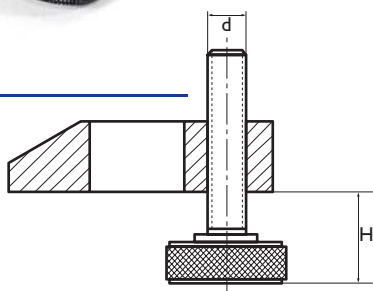
BRIDA REGULABLE

Ajustable clamps
Brides regulables



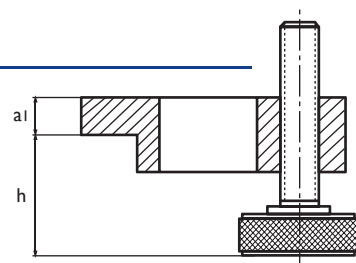
DIN 6314 T | DIN 6314 AT

DIN 6314 T



Ref.	b1 (mm)	L (mm)	d (mm)	H (min.)	H (max.)	M
5023	11	80	M-10	8	27	M-10
5024	14	100	M-12	10	34	M-12
				10	33	M-14
5025		125		13	41	M-16
50255	18	160	M-16	13	40	M-18
5026	22	160	M-20	16	55	M-20
				16	53	M-22
5027	26	200	M-24	20	60	M-24

DIN 6314 AT



Ref.	b1 (mm)	L (mm)	a1 (mm)	h (min.)	h (max.)	M
5028	11	80	12	11	30	M-10
5029	14	100	14	16	40	M-12
				16	39	M-14
5030	18	125	16	22	50	M-16
				22	49	M-18
5031	22	160	20	26	65	M-20
				26	63	M-22